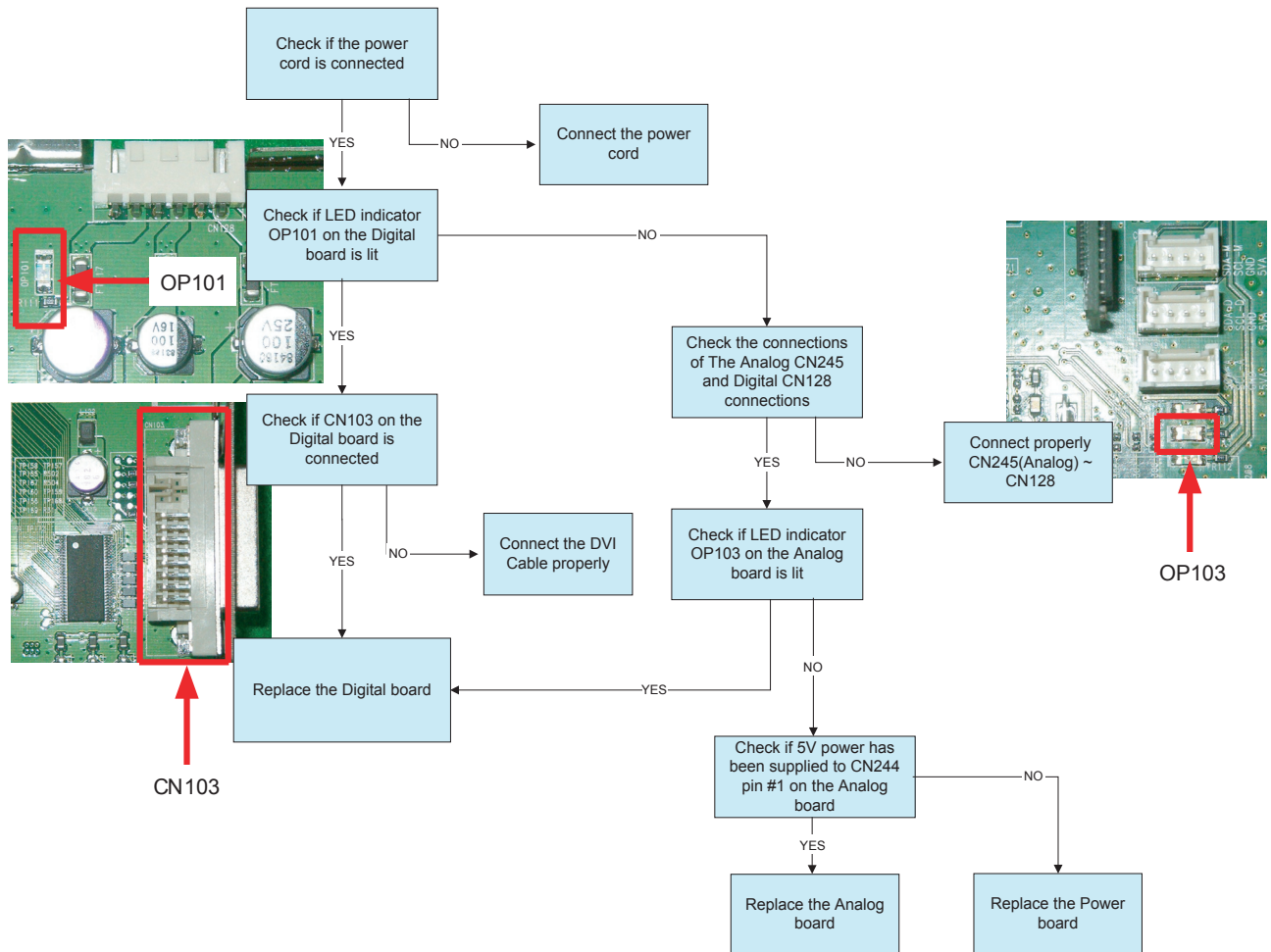


### 3. Troubleshooting

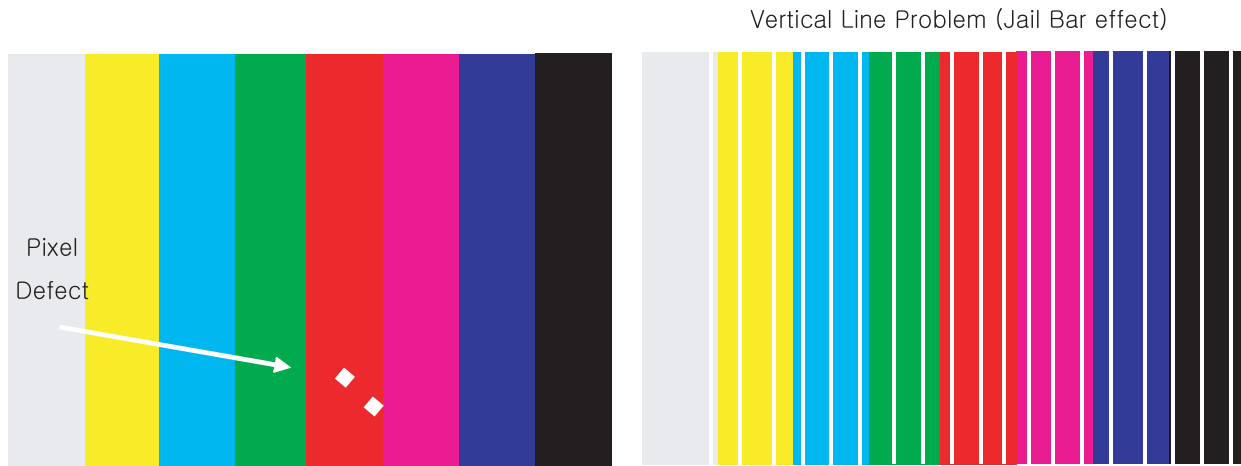
#### 3-1 Dead Set



## 3-2 SERVICE

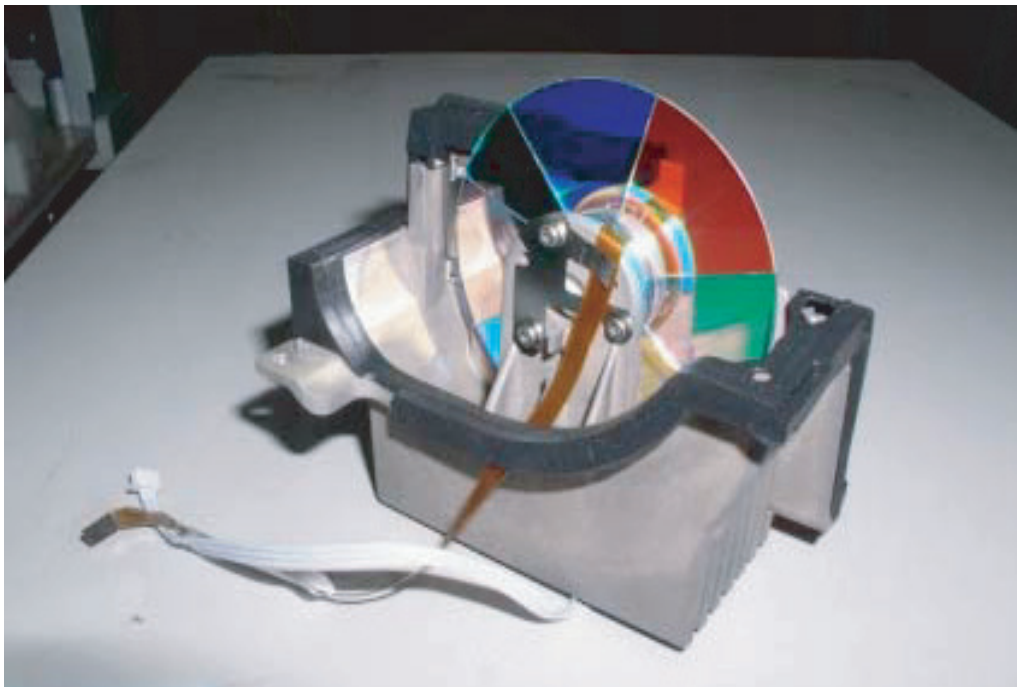
---

### 3-2-1 Service Hint #1 - DMD Board Assy



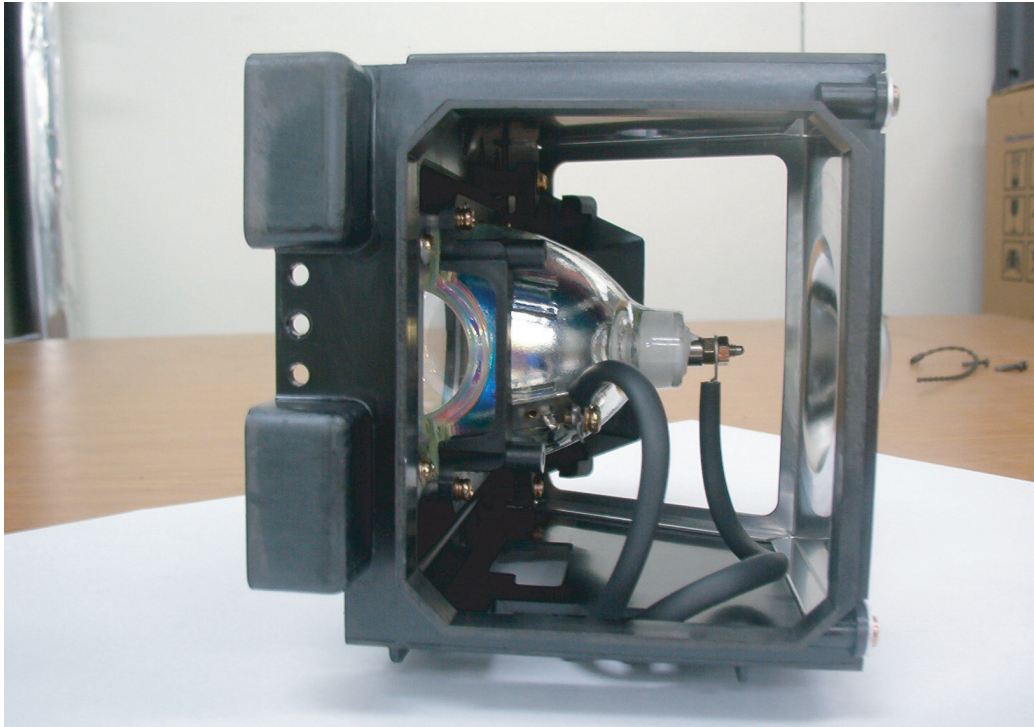
Problem : PIXEL DEFECT, VERTICAL LINE  
Solution : Change the DMD Board assembly

### 3-2-2 Service Hint #2 - ColorWheel Assy



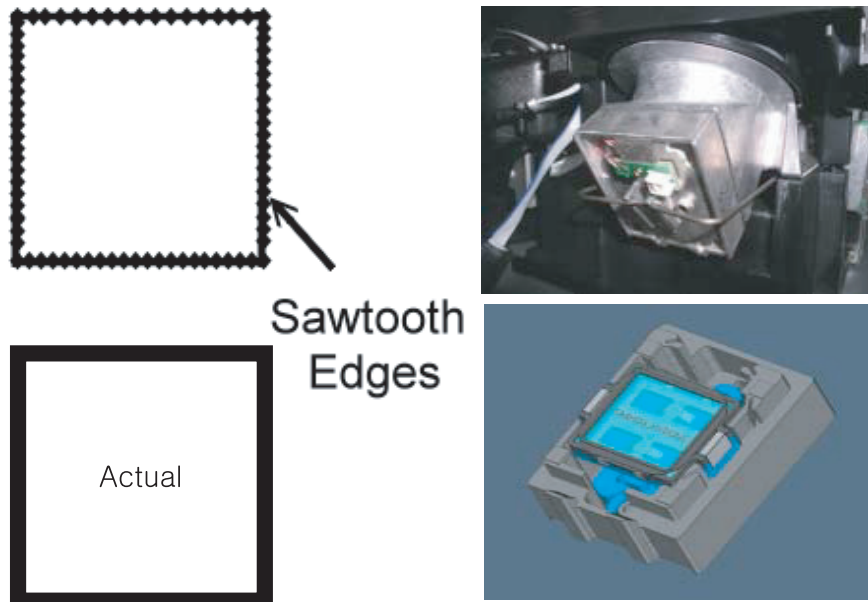
Problem : INCREASED NOISE  
Solution : Change the Color wheel module

### 3-2-3 Service Hint #3 - LAMP Assy



Problem : LOW BRIGHTNESS or No Power  
 Solution : Change the Lamp module

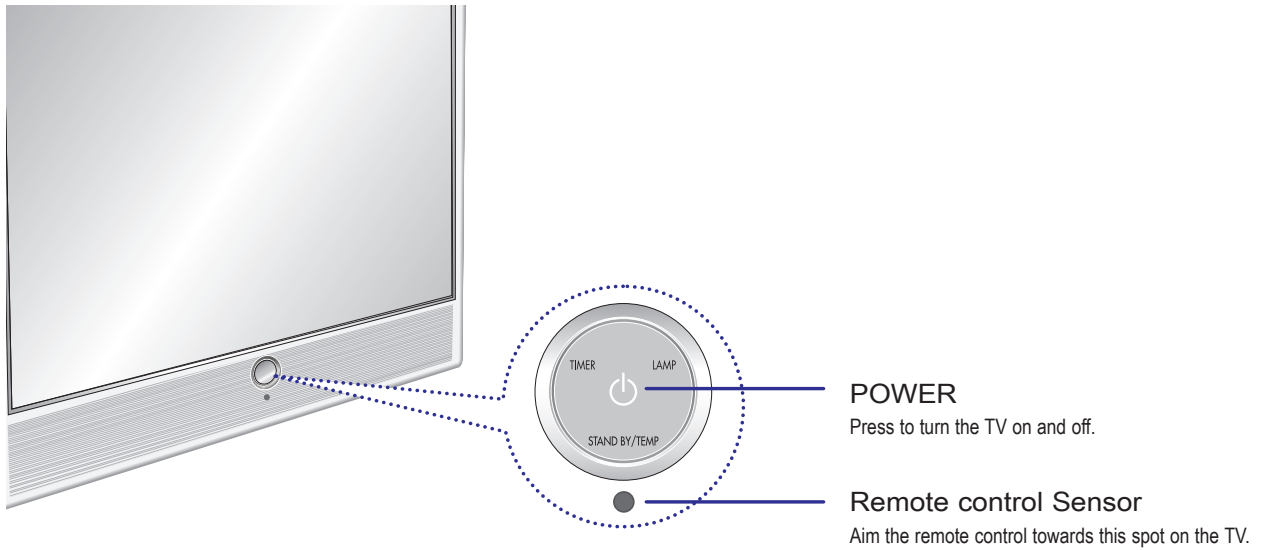
### 3-2-4 Service Hint #4 - Actuator



Problem : Noise in high frequency band(1200Hz), discordance on the border area  
 Solution : Change the Actuator

### 3-3 Status Table for LED

The three lights on the front panel indicate the status of your TV.



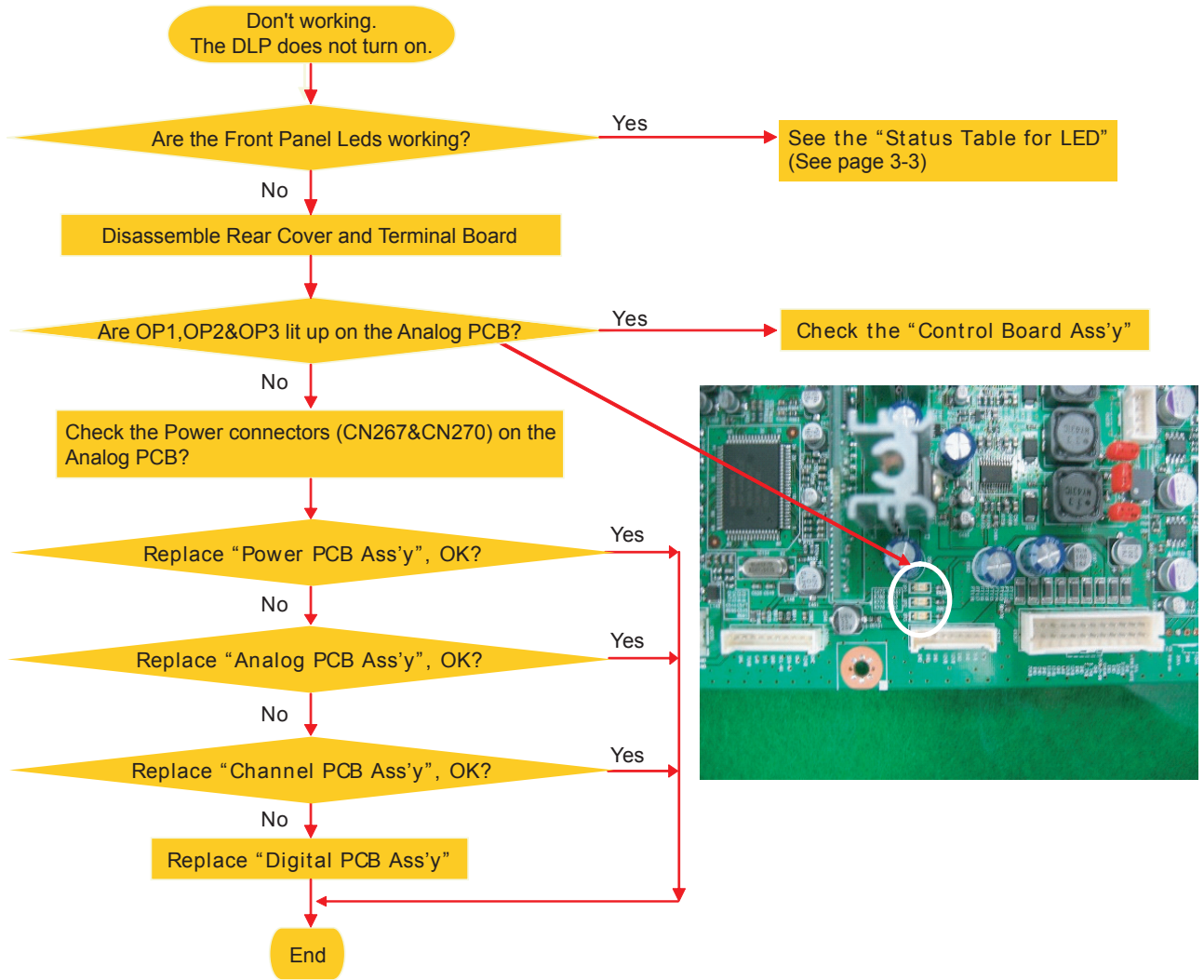
- : Light is On
- ◐ : Light is Blinking
- : Light is Off

TIMER	LAMP	STAND BY/TEMP	Indication
○	○	●	Standby state.
○	◐	○	The picture will automatically appear in about 15 seconds.
●	◐	○	Auto Timer ON/OFF has been set and the set will automatically be turned on in about 25 seconds.
◐	○	◐	A cooling fan inside the set is not operating normally.
○	◐	◐	Lamp cover on rear of the set is not properly shut.
○	○	◐	Check if the ventilation hole on the rear of the unit is blocked, because if the inner temperature is too high, the power will shut off.
◐	◐	◐	Lamp may be defective. Please contact a certified technician.

- \* It takes about 30 seconds for the TV to warm up, so normal brightness may not appear immediately.
- \* The TV has a fan to keep the inside lamp from overheating. You'll occasionally hear it working.

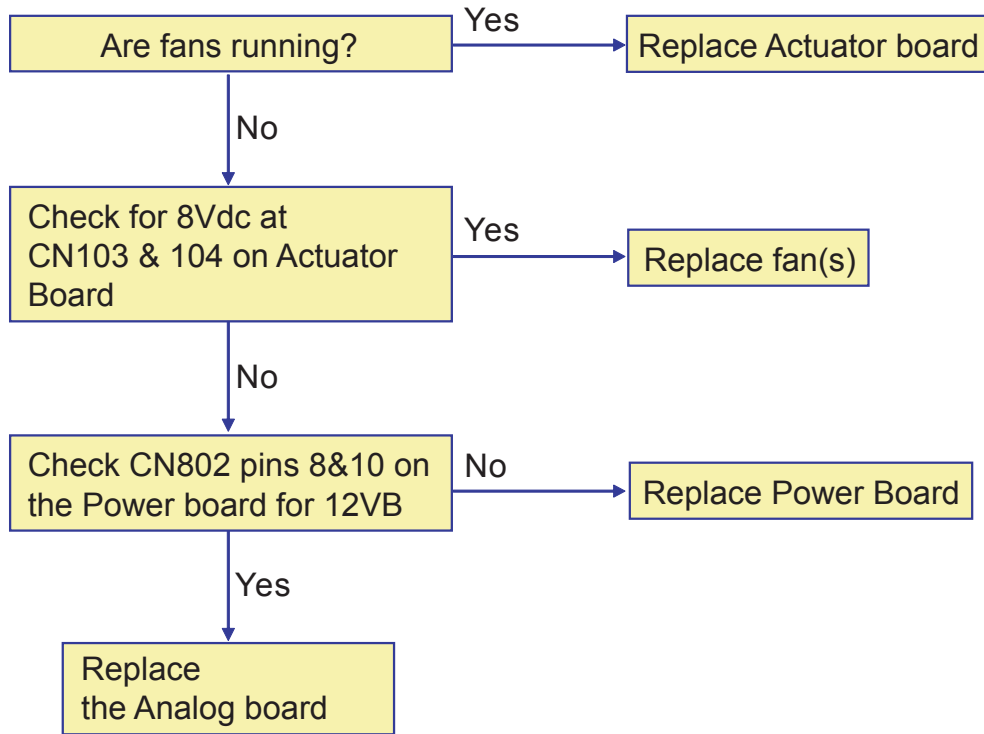


### 3-4 Flow Chart for Malfunction

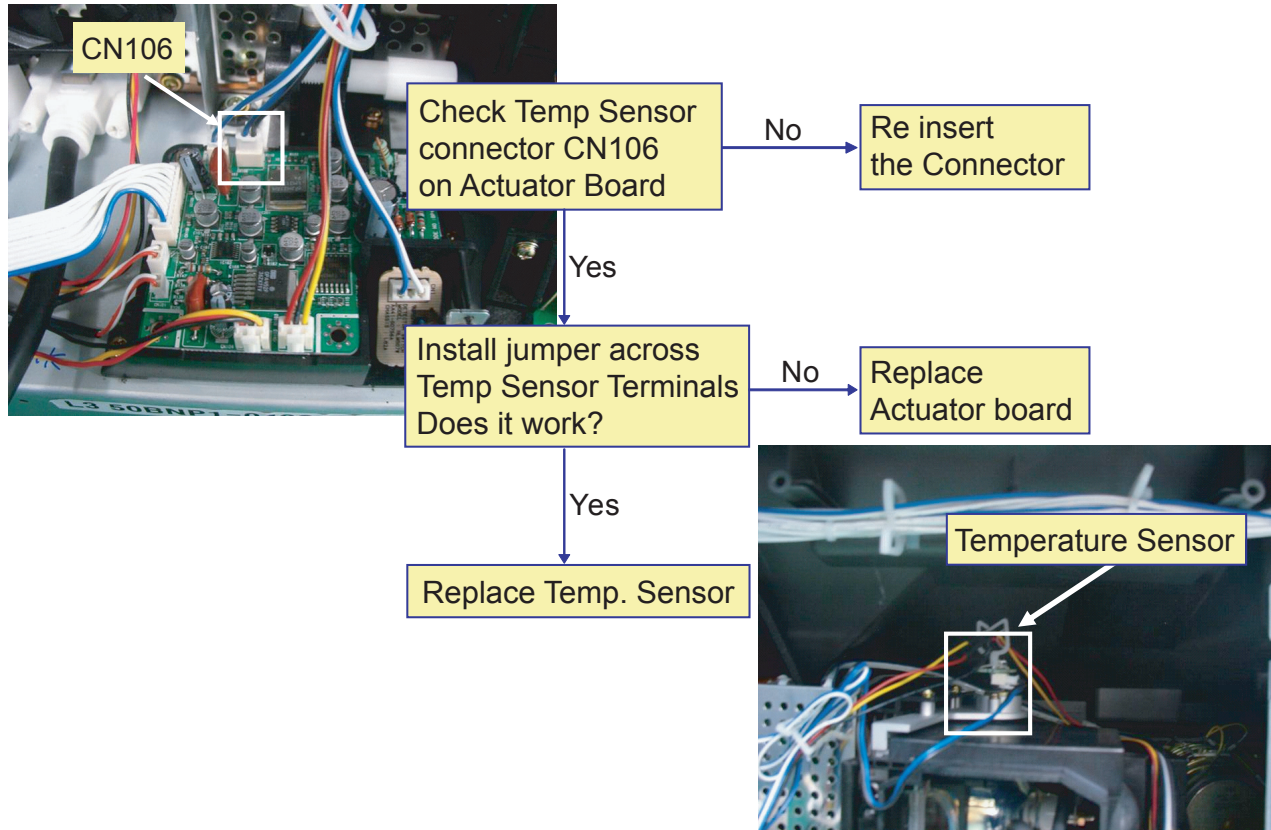


### 3-5 Blinking Temp & Timer LED

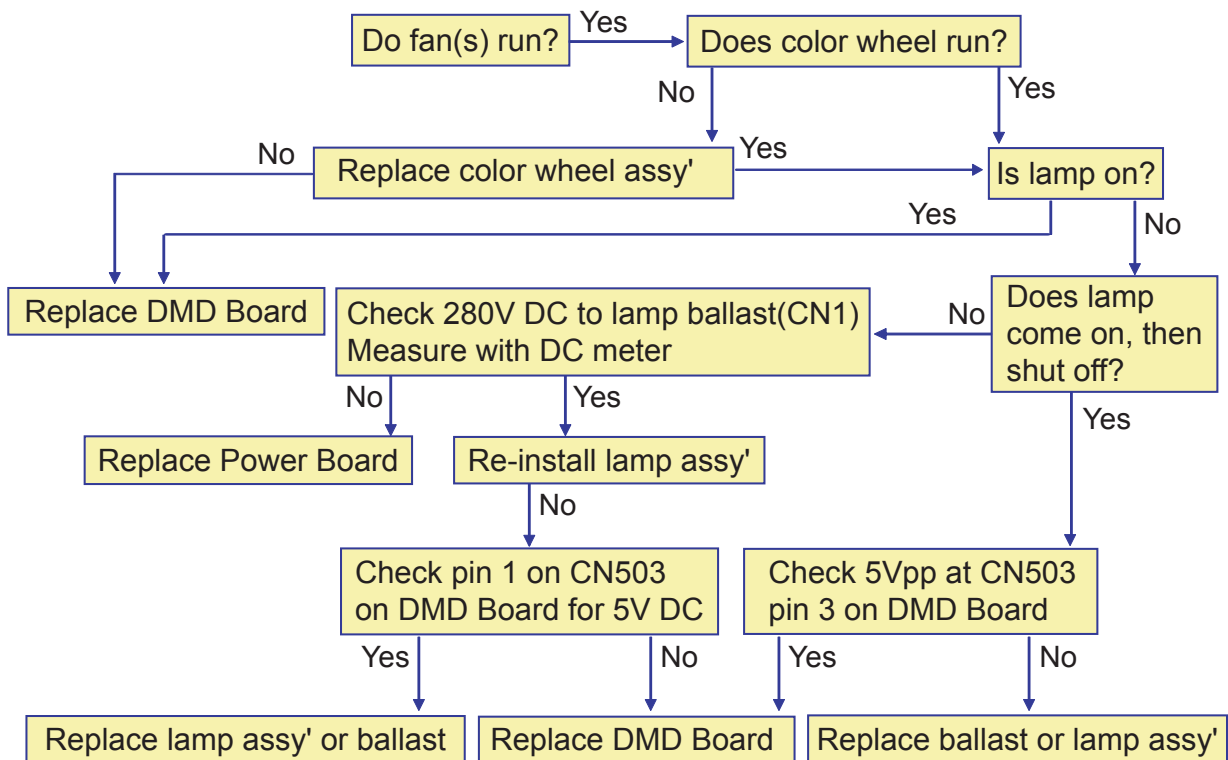
---



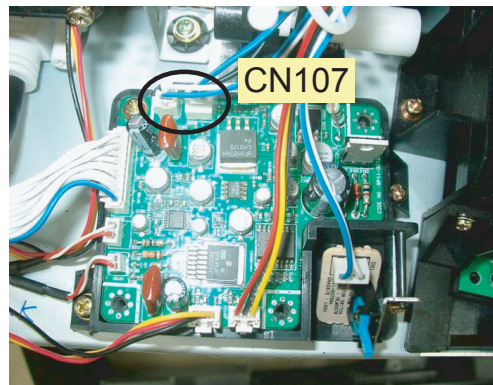
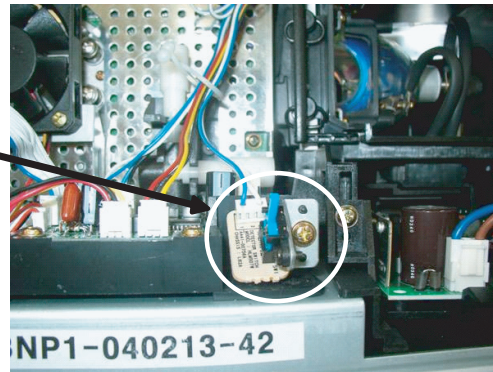
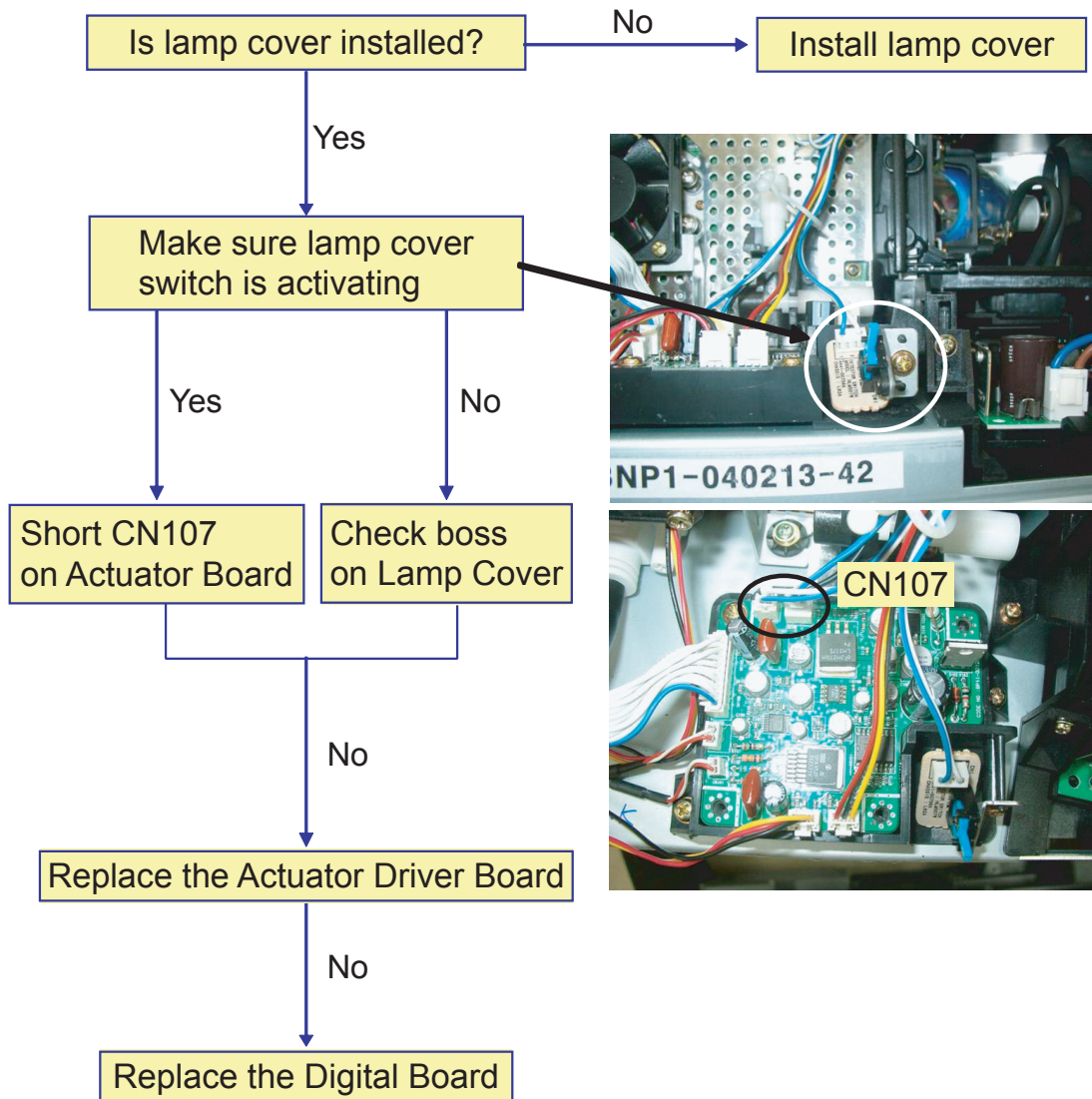
### 3-6 Blinking Temp LED



A blinking lamp LED is the most common failure indication. It can be caused by no lamp, no color wheel, no fan(s), or other defective components.



### 3-7 Blinking Lamp and Temp LEDs





## 3-8 Disassemble and Reassemble

### 3-8-1 Separation of the back cover and the chassis

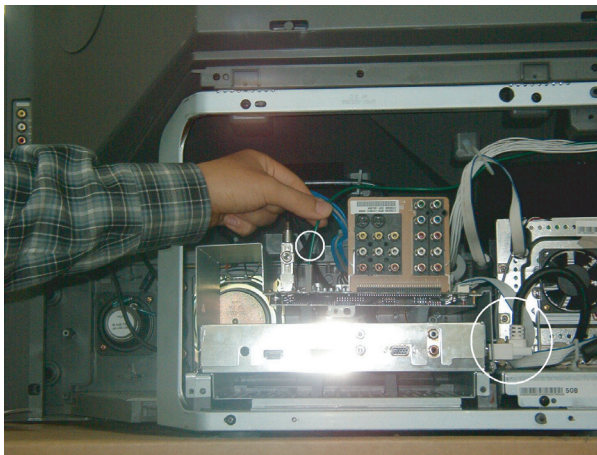
① Remove screws and back cover.



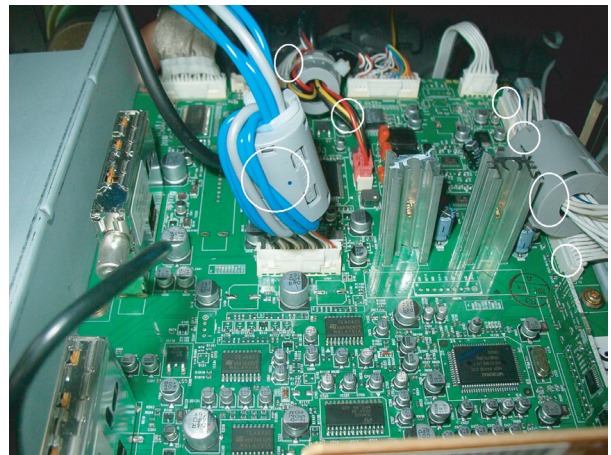
② Remove the screws and the terminal.



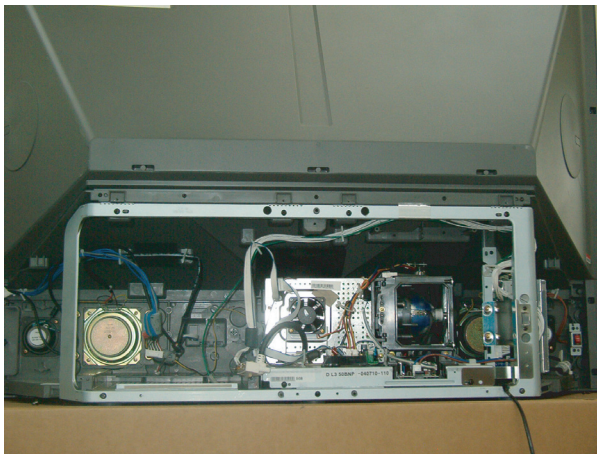
③ Separate a GT-Wire and DVI cable.



④ Separate the cables.



⑤ After separating the chassis.



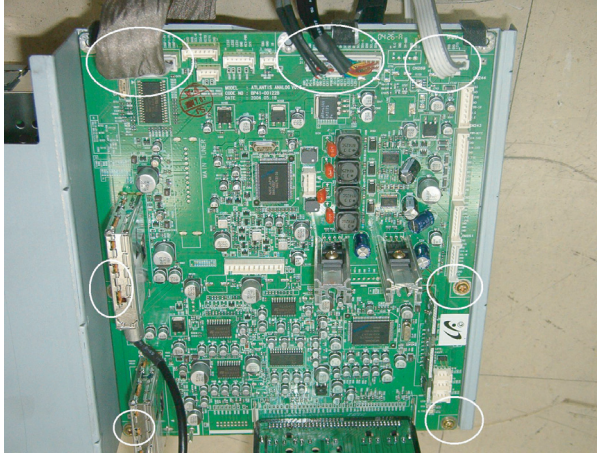
⑥ Chassis.



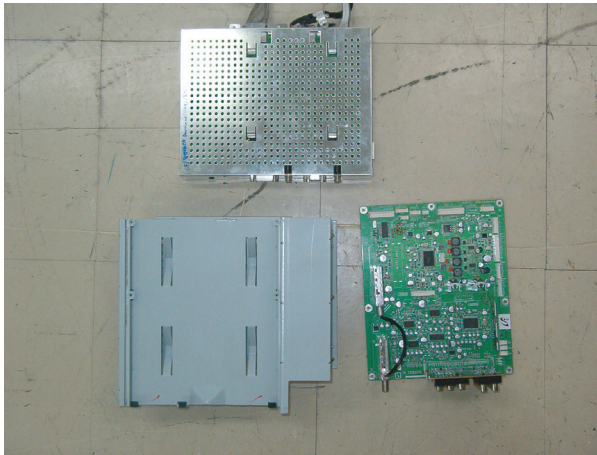


### 3-8-2 Separation of the Analog and Digital Board

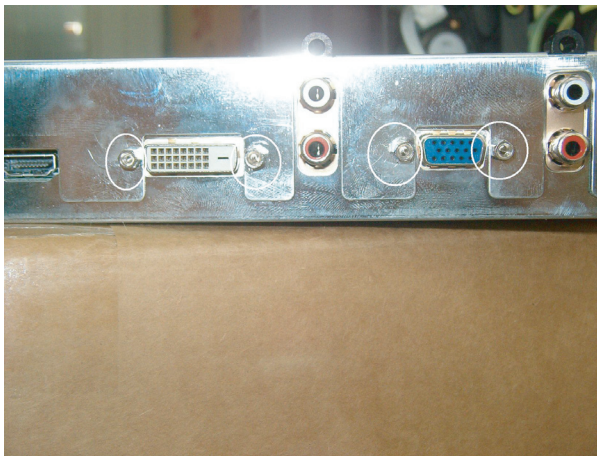
① Remove the screws and cables.



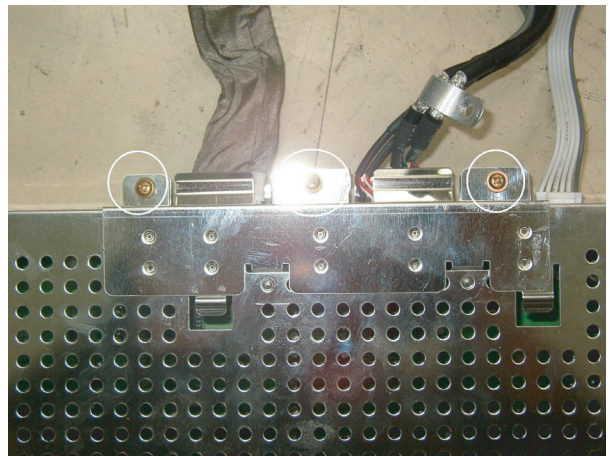
② Analog, Digital Board and Fan.



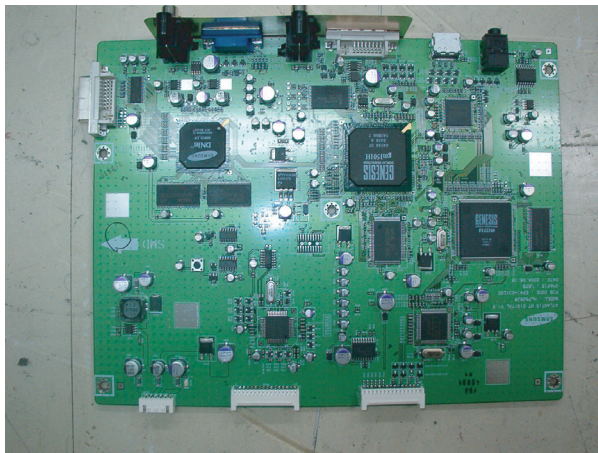
③ Remove the nuts.



④ Remove the screws.

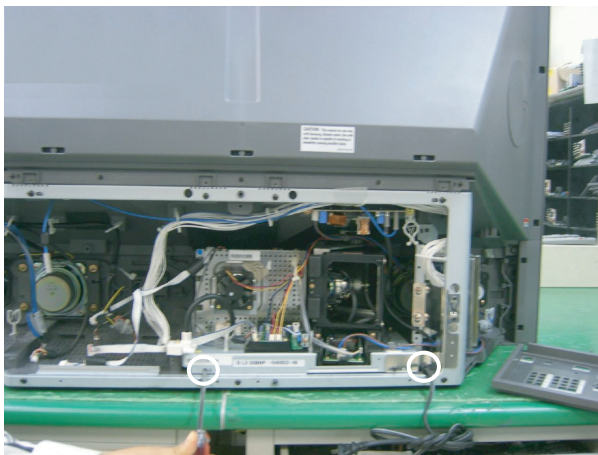


⑦ After removing a Top Shield case.

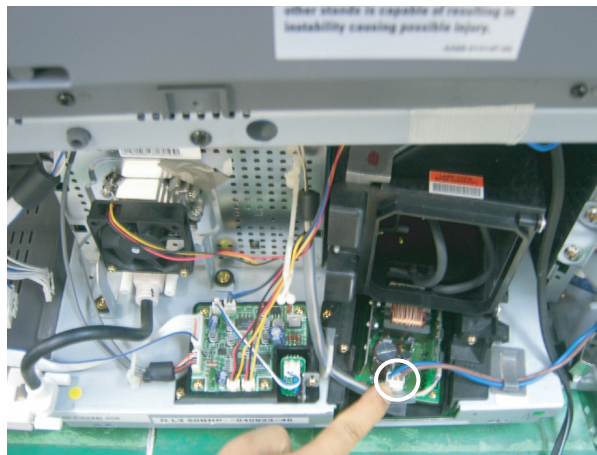


### 3-8-3 Separation of the optical engine.

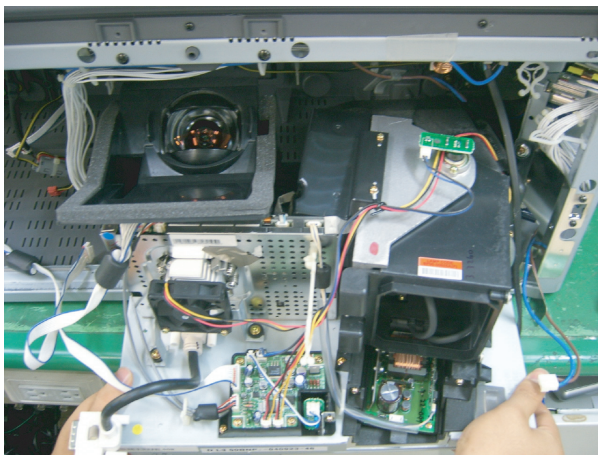
① Remove the screws.



② Separate the cables.



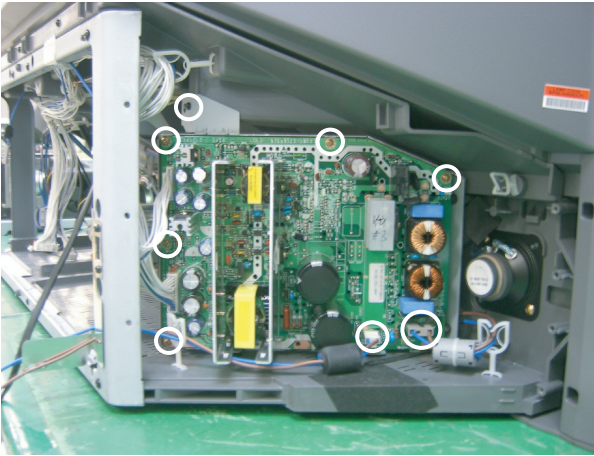
③ Separate the optical engine.



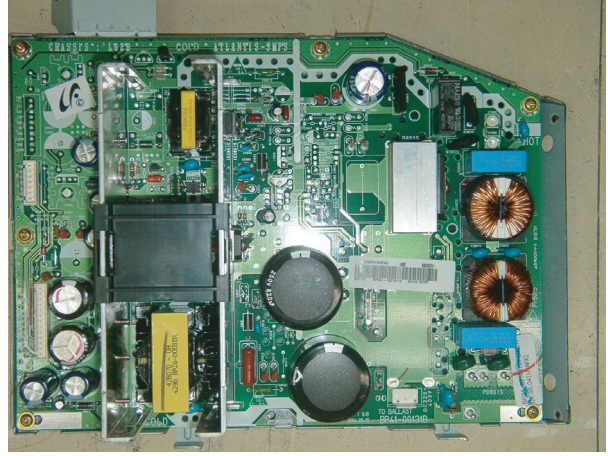


### 3-8-4 Separation of the Power Board

① Remove the screws and cables.



② Power Board

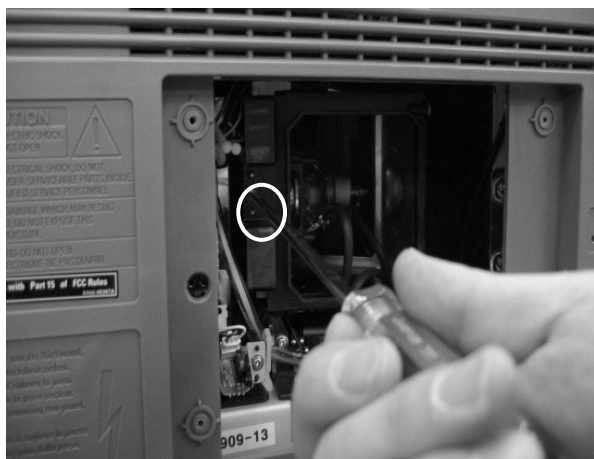


### 3-8-5 Lamp Replacement

- ① Unplug TV, then use a screwdriver to remove the screw. ② Remove the Lamp cover.



- ③ Remove the screw securing the Lamp by using a screwdriver.



- ④ Separate the Lamp from the engine by holding the handle.



- ⑤ Pull the Lamp out



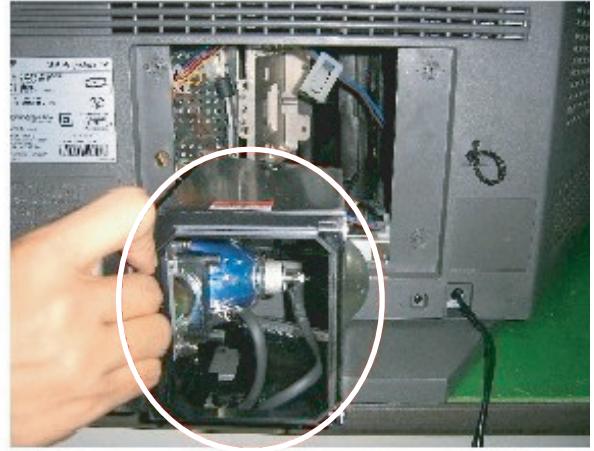
- ⑥ To reinstall the Lamp, follow these steps in reverse order.

### 3-8-6 Ballast Replacement

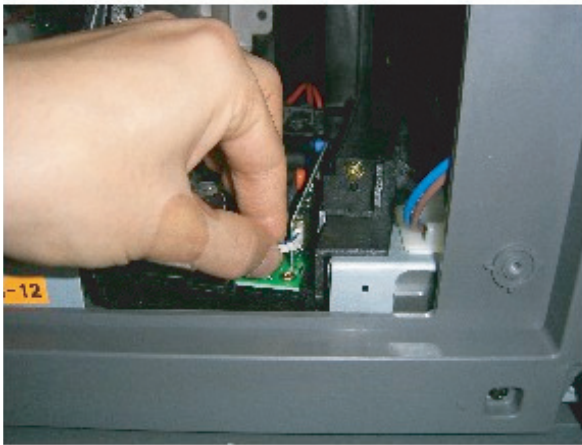
① Remove the Ballast power cable.



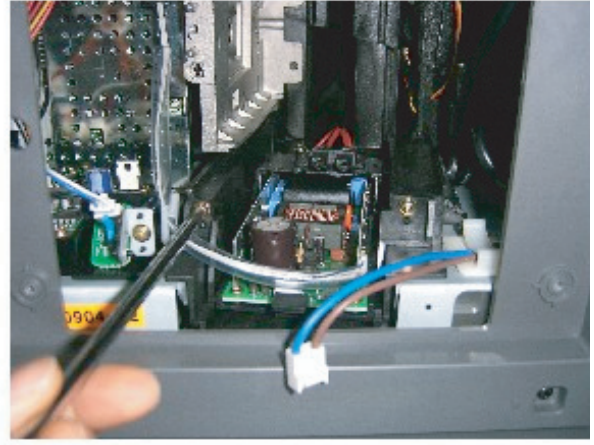
② Disassemble the lamp ass'y.



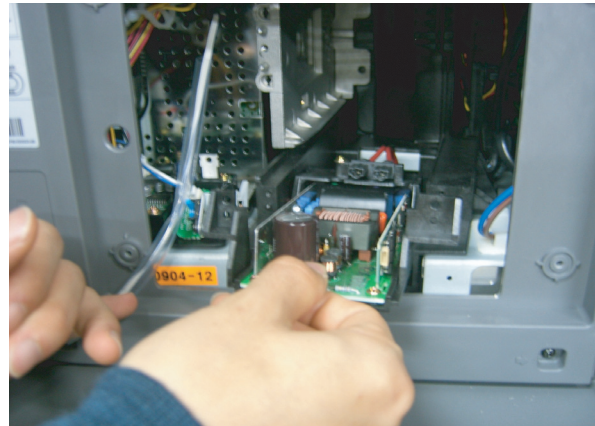
③ Remove the Ballast SCI cable.



④ Remove the two screws at the Holder Ballast.



⑤ Pull out the Ballast assembly.



⑥ Replace it with a new kit and re-assemble it in the reverse order.

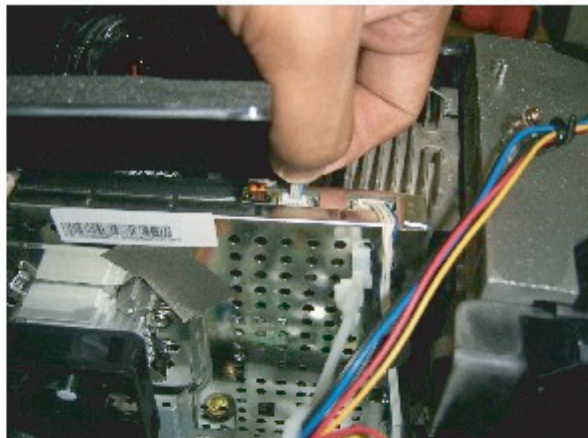


### 3-8-7 Color Wheel Ass'y Replacement

① Disassemble the Cover Color wheel.



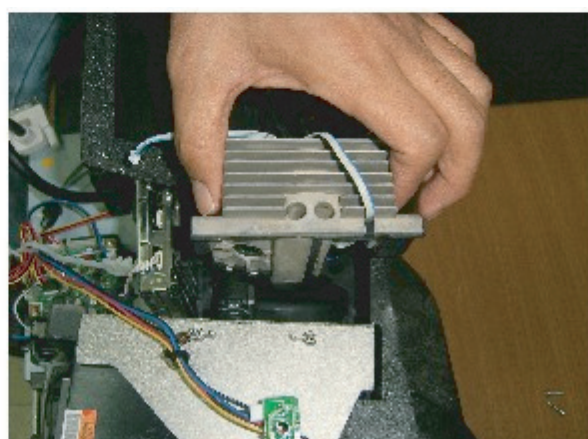
② Remove two cables at the DMD Board.



③ Remove two screws.



④ Disassemble the color wheel assembly.



⑤ Replace it with a new color wheel and rubber assembly.



Caution: Never touch the color wheel. Touch only the cover assembly.

### 3-8-8 Actuator(Smooth Picture) Replacement

① Remove the cable at the Actuator.



② Push the steel spring wire to bottom of the Actuator Assy.



③ Replace it with a new actuator.

